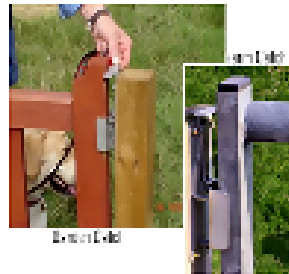




Fitting your Garden or Farm Catch

Hang the gate between the gate posts so that it can open in either direction, leaving a gap between the gate and gatepost of about **33 mm**.

Use four stainless steel or any rust treated 5 mm screws, screw the catch into the centre of the gatepost at a height to suit your needs.



Hinge sets for garden gates fitted to wooden gateposts are available on our accessories page



For more information on the fitting of catches or accessories please ring 07768 748494